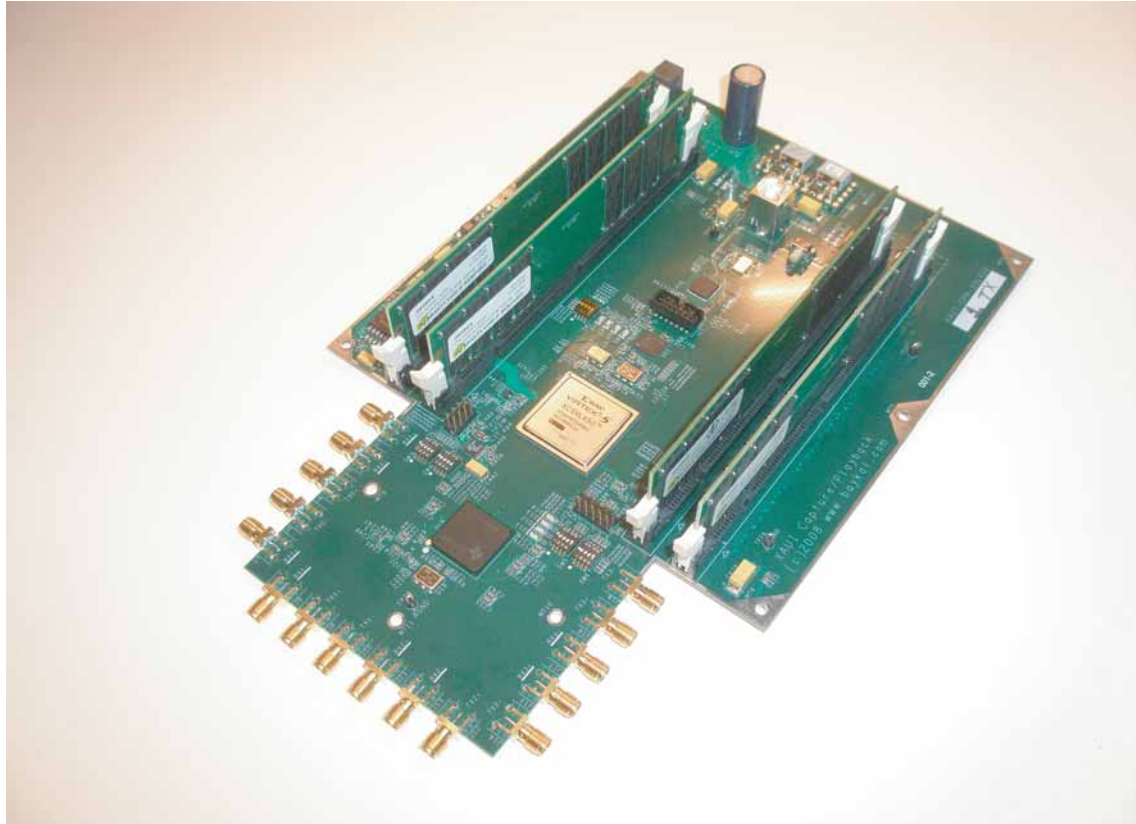


## XAUI Capture and Playback Board



### SPECIFICATIONS

XAUI (Extended Auxiliary Unit Interface) real-time Capture/Playback, with on board 4Giga Byte memory and High Speed USB 2.0 interface, to host computer for data retrieval and upload. Integrated Host PC Application to interface with XAUI Board through Hi-Speed USB Cable. Point-to-point baseband data transmission over 50 ohm controlled-impedance media. Selectable instant Tx Test Pattern generation and corresponding expected Rx data integrity check in real-time.

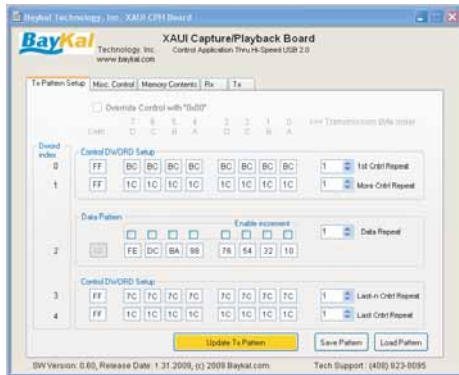
### SUPPORTED FEATURES

- XAUI Interface IEEE 802.3ae
- Quad 3.125 Gbps per channel transceiver providing 10-Gbps data throughput
- Selectable synchronized or independent channel operation
- Selectable transmit-only, receive-only, transceiver, and repeat functions
- Selectable 8-b/10-b ENDEC
- Receiver differential input thresholds 200 mVp-p

### ORDERING INFORMATION

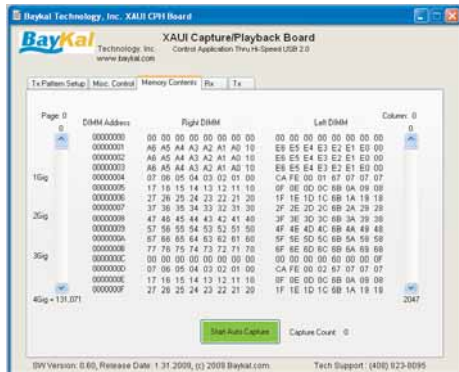
Available to ship today, please call Sales @ (408) 823-8095, or email [emre@baykal.com](mailto:emre@baykal.com)

# Easy to use Windows Application



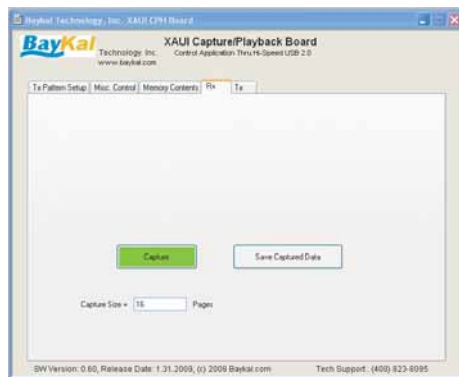
## Pattern Generation:

Easy to use, just click and enter any pattern and control character combinations. Also byte, word or dword auto increment pattern by just click of a check mark. Transmission data order can be saved and retrieved for future usage.



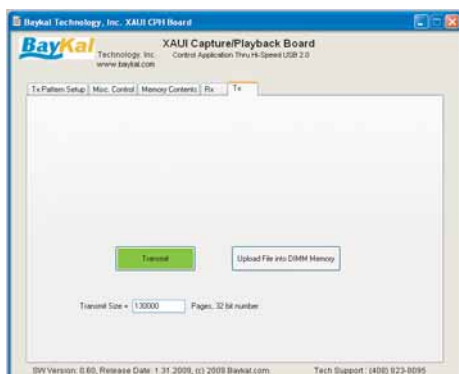
## Browse Memory Contents:

After file upload to memory or capture of incoming data, contents of on board 4 Giga Byte memory can be browsed and quickly studied. Also auto capture mode can be initiated by click of a button allowing real-time display of captured data in memory.



## Capture and Store to a file:

Initiate capture with a click of a button. Incoming real-time data will be captured into memory. Capture size can be entered in terms of pages in the DIMM memory. Total page count for 4Giga byte memory is 132,172. This gives approximately 3.25 seconds of real-time data to be stored. After the capture button is activated, stored information can be saved to a text file with the save button. File size is proportional to the requested capture page size.



## Transmit Stored Information:

Locate file on the computer and upload file into memory with just a click of a button. Then initiate the Transmit. Number of pages to transmit is indicated in transmit Size entry section. After upload of data, a larger transmit size can be selected for repeated sweep of memory contents.